

Full Panel Test Results.

PRODUCT:
The Flight

STRENGTH:
40 MG (600)

BATCH #:
20071A

Having trouble reading these panel results?

Reach out to us at +1 844.311.9090

Order #: FEA200819-030047 Order Date: 2020-08-19 Collection Date: 2020-08-24 Report Date: 2020-09-09

Batch #: 20071A
 Sample #: AAAM023
 Specimen Type: CBD/HEMP Derivative Products (Ingestion)
 Extracted From: Hemp
 Description: Feals 600

Initial Gross Weight: 14.62 g
 Method: SOP-3



Heavy Metals Passed	Mycotoxins Passed	Pesticides Passed
Additional Pesticides Passed	Residual Solvents Passed	Water Activity Tested
Listeria Monocytogenes Passed	Pathogenic Passed	Filth and Foreign Material Passed

Heavy Metals (Passed)

(ICP-MS)

Analyte	Action Level (ppb)	Result (ppb)	LOQ (ppb)	Analyte	Action Level (ppb)	Result (ppb)	LOQ (ppb)	Analyte	Action Level (ppb)	Result (ppb)	LOQ (ppb)
Arsenic (As)	1500	<LOQ	100	Cadmium (Cd)	500	<LOQ	100	Lead (Pb)	500	<LOQ	100
Mercury (Hg)	3000	<LOQ	100								

(ppb) = Parts per Billion, (ppb) = (µg/kg), , LOQ = Limit of Quantitation

Xueli Gao Lab Toxicologist
 Ph.D., DABT

Aixia Sun Principal Scientist
 D.H.Sc., M.Sc., B.Sc., MT (AAB)

This report shall not be reproduced, without written approval, from ACS Laboratory. The results of this report relate only to the material or product analyzed. Test results are confidential unless explicitly waived otherwise. Accredited by a third-party accrediting body as a competent testing laboratory pursuant to ISO/IEC 17025 of the International Organization for Standardization.

721 Cortaro Drive
 Sun City Center, FL - 33573

P: +1 (866) 762-8379
 F: +1 (813) 634-4538

E: info@acslabcannabis.com
<http://www.acslabcannabis.com>

License No. 800025015
 CLIA No. 10D1094068

Full Panel Test Results.

PRODUCT:
The Flight

STRENGTH:
80 MG (1200)

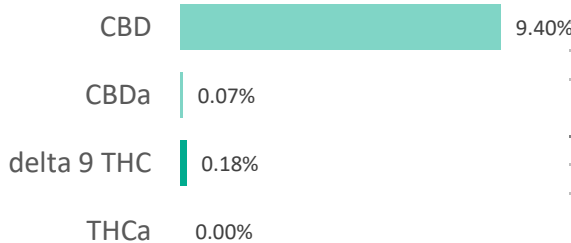
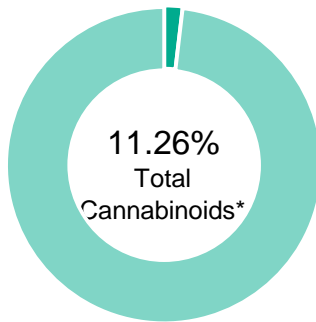
BATCH #:
20072A

Having trouble reading these panel results?

Reach out to us at +1 844.311.9090

Feals 1200

Batch ID:	20072A	Test ID:	T000091708
Reported:	24-Aug-2020	Method:	TM14
Type:	Concentrate		
Test:	Potency		

CANNABINOID PROFILE


Compound	LOQ (%)	Result (%)	Result (mg/g)
Delta 9-Tetrahydrocannabinolic acid (THCA-A)	0.04	ND	ND
Delta 9-Tetrahydrocannabinol (Delta 9THC)	0.02	0.18	1.8
Cannabidiolic acid (CBDA)	0.05	0.07	0.7
Cannabidiol (CBD)	0.03	9.40	94.0
Delta 8-Tetrahydrocannabinol (Delta 8THC)	0.02	ND	ND
Cannabinolic Acid (CBNA)	0.06	ND	ND
Cannabinol (CBN)	0.02	0.28	2.8
Cannabigerolic acid (CBGA)	0.04	ND	ND
Cannabigerol (CBG)	0.02	0.36	3.6
Tetrahydrocannabivarinic Acid (THCVA)	0.03	ND	ND
Tetrahydrocannabivarin (THCV)	0.02	ND	ND
Cannabidivarinic Acid (CBDVA)	0.05	ND	ND
Cannabidivarin (CBDV)	0.03	0.16	1.6
Cannabichromenic Acid (CBCA)	0.03	ND	ND
Cannabichromene (CBC)	0.04	0.81	8.1
Total Cannabinoids		11.26	112.6
Total Potential THC**		0.18	1.8
Total Potential CBD**		9.46	94.6

NOTES:

N/A


% = % (w/w) = Percent (Weight of Analyte / Weight of Product)

* Total Cannabinoids result reflects the absolute sum of all cannabinoids detected.

** Total Potential THC/CBD is calculated using the following formulas to take into account the loss of a carboxyl group during decarboxylation step.


Total THC = THC + (THCa * (0.877)) and Total CBD = CBD + (CBDa * (0.877))

ND = None Detected (Defined by Dynamic Range of the method)

FINAL APPROVAL


Tyler Wiese
24-Aug-2020
6:07 PM

PREPARED BY / DATE



Greg Zimpfer
24-Aug-2020
9:44 PM

APPROVED BY / DATE

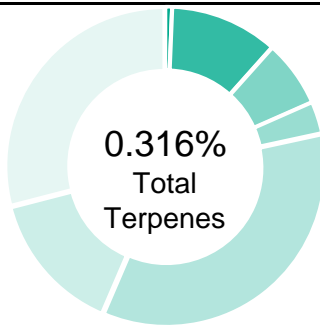
Testing results are based solely upon the sample submitted to Botanacor Laboratories, LLC, in the condition it was received. Botanacor Laboratories, LLC warrants that all analytical work is conducted professionally in accordance with all applicable standard laboratory practices using validated methods. Data was generated using an unbroken chain of comparison to NIST traceable Reference Standards and Certified Reference Materials. This report may not be reproduced, except in full, without the written approval of Botanacor Laboratories, LLC. ISO/IEC 17025:2005 Accredited A2LA Certificate Number 4329.02



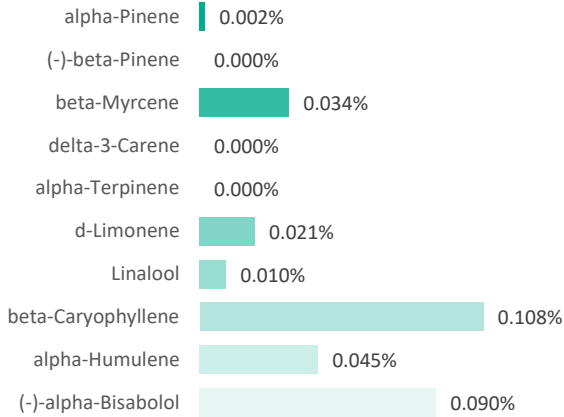
Certificate #4329.02

Feals 1200

Batch ID:	20072A	Test ID:	5420591.007
Reported:	25-Aug-2020	Method:	TM10
Type:	Concentrate		
Test:	Terpenes		


TERPENE PROFILE


Compound	%(w/w)	mg/g
(-)-alpha-Bisabolol	0.090	0.9
Camphene	0.000	0
delta-3-Carene	0.000	0
beta-Caryophyllene	0.108	1.08
(-)-Caryophyllene Oxide	0.000	0
p-Cymene	0.000	0
Eucalyptol	0.001	0.01
Geraniol	0.000	0
alpha-Humulene	0.045	0.45
(-)-Isopulegol	0.000	0
d-Limonene	0.021	0.21
Linalool	0.010	0.1
beta-Myrcene	0.034	0.34
cis-Nerolidol	0.000	0
trans-Nerolidol	0.004	0.04
Ocimene	0.000	0
beta-Ocimene	0.000	0
alpha-Pinene	0.002	0.02
(-)-beta-Pinene	0.000	0
alpha-Terpinene	0.000	0
gamma-Terpinene	0.000	0
Terpinolene	0.001	0.01
	0.316%	3.16

PREDOMINANT TERPENES

NOTES:

0

FINAL APPROVAL

 Michelle Gagnon 25-Aug-2020 2:13 PM	 Greg Zimpfer 25-Aug-2020 4:39 PM
--	---

PREPARED BY / DATE

APPROVED BY / DATE

Testing results are based solely upon the sample submitted to Botanacor Laboratories, LLC. Botanacor Laboratories, LLC warrants that all analytical work is conducted professionally in accordance with all applicable standard laboratory practices using validated methods. Data was generated using an unbroken chain of comparison to NIST traceable Reference Standards and Certified Reference Materials. This report may not be reproduced, except in full, without the written approval of Botanacor Laboratories, LLC. ISO/IEC 17025:2005 Accredited A2LA Certificate Number 4329.02



Certificate #4329.02

Certificate of Analysis

Order #: FEA200819-030047 Order Date: 2020-08-19 Collection Date: 2020-08-24 Report Date: 2020-09-09

Batch #: 20072A
 Sample #: AAAM024
 Specimen Type: CBD/HEMP Derivative Products (Ingestion)
 Extracted From: Hemp
 Description: Feals 1200

Method: SOP-3



Heavy Metals Passed	Mycotoxins Passed	Pesticides Passed
Additional Pesticides Passed	Residual Solvents Passed	Water Activity Tested
Listeria Monocytogenes Passed	Pathogenic Passed	Filth and Foreign Material Passed

Heavy Metals (Passed)

(ICP-MS)

Analyte	Action Level (ppb)	Result (ppb)	LOQ (ppb)	Analyte	Action Level (ppb)	Result (ppb)	LOQ (ppb)	Analyte	Action Level (ppb)	Result (ppb)	LOQ (ppb)
Arsenic (As)	1500	<LOQ	100	Cadmium (Cd)	500	<LOQ	100	Lead (Pb)	500	<LOQ	100
Mercury (Hg)	3000	<LOQ	100								

(ppb) = Parts per Billion, (ppb) = (µg/kg), , LOQ = Limit of Quantitation

Xueli Gao Lab Toxicologist
 Ph.D., DABT

Aixia Sun Principal Scientist
 D.H.Sc., M.Sc., B.Sc., MT (AAB)

This report shall not be reproduced, without written approval, from ACS Laboratory. The results of this report relate only to the material or product analyzed. Test results are confidential unless explicitly waived otherwise. Accredited by a third-party accrediting body as a competent testing laboratory pursuant to ISO/IEC 17025 of the International Organization for Standardization.

721 Cortaro Drive
 Sun City Center, FL - 33573

P: +1 (866) 762-8379
 F: +1 (813) 634-4538

E: info@acslabcannabis.com
<http://www.acslabcannabis.com>

License No. 800025015
 CLIA No. 10D1094068

Order #: FEA200819-030047 Order Date: 2020-08-19 Collection Date: 2020-08-24 Report Date: 2020-09-09

Batch #: 20072A
 Sample #: AAAM024
 Specimen Type: CBD/HEMP Derivative Products (Ingestion)
 Extracted From: Hemp
 Description: Feals 1200

Method: SOP-3



Mycotoxins (Passed)

(LCMS/API/GCMS)

Analyte	Action Level (ppb)	Result (ppb)	LOQ (ppb)	Analyte	Action Level (ppb)	Result (ppb)	LOQ (ppb)	Analyte	Action Level (ppb)	Result (ppb)	LOQ (ppb)
Aflatoxin B1	20	<LOQ	6	Aflatoxin B2	20	<LOQ	6	Aflatoxin G1	20	<LOQ	6
Aflatoxin G2	20	<LOQ	6	Ochratoxin A	20	<LOQ	12				

(ppb) = Parts per Billion, (ppb) = (µg/kg), , LOQ = Limit of Quantitation

Xueli Gao Lab Toxicologist
 Ph.D., DABT

Aixia Sun Principal Scientist
 D.H.Sc., M.Sc., B.Sc., MT (AAB)

This report shall not be reproduced, without written approval, from ACS Laboratory. The results of this report relate only to the material or product analyzed. Test results are confidential unless explicitly waived otherwise. Accredited by a third-party accrediting body as a competent testing laboratory pursuant to ISO/IEC 17025 of the International Organization for Standardization.

721 Cortaro Drive
 Sun City Center, FL - 33573

P: +1 (866) 762-8379
 F: +1 (813) 634-4538

E: info@acslabcannabis.com
<http://www.acslabcannabis.com>

License No. 800025015
 CLIA No. 10D1094068

Order #: FEA200819-030047 Order Date: 2020-08-19 Collection Date: 2020-08-24 Report Date: 2020-09-09

Batch #: 20072A
 Sample #: AAAM024
 Specimen Type: CBD/HEMP Derivative Products (Ingestion)
 Extracted From: Hemp
 Description: Feals 1200

Method: SOP-3



Pesticides FL V4 (Non-Inhalable) (Passed)

(LCMS/API/GCMS)

Analyte	Action Level (ppb)	Result (ppb)	LOQ (ppb)	Analyte	Action Level (ppb)	Result (ppb)	LOQ (ppb)	Analyte	Action Level (ppb)	Result (ppb)	LOQ (ppb)
Abamectin	300	<LOQ	28.23	Acephate	3000	<LOQ	30	Acequinocyl	2000	<LOQ	48
Acetamiprid	3000	<LOQ	30	Aldicarb	100	<LOQ	30	Azoxystrobin	3000	<LOQ	10
Bifenazate	3000	<LOQ	30	Bifenthrin	500	<LOQ	30	Boscalid	3000	<LOQ	10
Captan	3000	<LOQ	30	Carbaryl	500	<LOQ	10	Carbaryl	500	<LOQ	10
Carbofuran	100	<LOQ	10	Chlorantraniliprole	3000	<LOQ	10	Chlordane	100	<LOQ	10
Chlorfenapyr	100	<LOQ	30	Chlormequat Chloride	3000	<LOQ	10	Chlorpyrifos	100	<LOQ	30
Coumaphos	100	<LOQ	48	Cyfluthrin	1000	<LOQ	30	Clofentezine	500	<LOQ	30
Daminozide	100	<LOQ	30	Diazinon	200	<LOQ	30	Cypermethrin	1000	<LOQ	30
Dimethoate	100	<LOQ	30	Dimethomorph	3000	<LOQ	48	Dichlorvos	100	<LOQ	30
Etofenprox	100	<LOQ	30	Etoazole	1500	<LOQ	30	Ethoprophos	100	<LOQ	30
Fenoxycarb	100	<LOQ	30	Fenpyroximate	2000	<LOQ	30	Fenhexamid	3000	<LOQ	10
Flonicamid	2000	<LOQ	30	Fludioxonil	3000	<LOQ	48	Fipronil	100	<LOQ	30
Imazalil	100	<LOQ	30	Imidacloprid	3000	<LOQ	30	Hexythiazox	2000	<LOQ	30
Malathion	2000	<LOQ	30	Metalaxyl	3000	<LOQ	10	Kresoxim Methyl	1000	<LOQ	30
Methomyl	100	<LOQ	30	methyl-Parathion	100	<LOQ	10	Methiocarb	100	<LOQ	30
Myclobutanil	3000	<LOQ	30	Naled	500	<LOQ	30	Mevinphos	100	<LOQ	10
Paclobutrazol	100	<LOQ	30	Pentachloronitrobenzene	200	<LOQ	10	Oxamyl	500	<LOQ	30
Piperonylbutoxide	3000	<LOQ	30	Prallethrin	400	<LOQ	30	Permethrin	1000	<LOQ	30
Propoxur	100	<LOQ	30	Pyrethrins	1000	<LOQ	30	Phosmet	200	<LOQ	30
Spinetoram	3000	<LOQ	10	Spinosad	3000	<LOQ	30	Propiconazole	1000	<LOQ	30
Spirotetramat	3000	<LOQ	30	Spiroxamine	100	<LOQ	30	Pyridaben	3000	<LOQ	30
Thiacloprid	100	<LOQ	30	Thiamethoxam	1000	<LOQ	30	Spiromesifen	3000	<LOQ	30
								Tebuconazole	1000	<LOQ	30
								Trifloxystrobin	3000	<LOQ	30

(ppb) = Parts per Billion, (ppb) = (µg/kg), , LOQ = Limit of Quantitation

Xueli Gao Lab Toxicologist
 Ph.D., DABT

Aixia Sun Principal Scientist
 D.H.Sc., M.Sc., B.Sc., MT (AAB)

This report shall not be reproduced, without written approval, from ACS Laboratory. The results of this report relate only to the material or product analyzed. Test results are confidential unless explicitly waived otherwise. Accredited by a third-party accrediting body as a competent testing laboratory pursuant to ISO/IEC 17025 of the International Organization for Standardization.

721 Cortaro Drive
 Sun City Center, FL - 33573

P: +1 (866) 762-8379
 F: +1 (813) 634-4538

E: info@acslabcannabis.com
<http://www.acslabcannabis.com>

License No. 800025015
 CLIA No. 10D1094068

Order #: FEA200819-030047 Order Date: 2020-08-19 Collection Date: 2020-08-24 Report Date: 2020-09-09

Batch #: 20072A
 Sample #: AAAM024
 Specimen Type: CBD/HEMP Derivative Products (Ingestion)
 Extracted From: Hemp
 Description: Feals 1200

Method: SOP-3



Additional Pesticides (Passed)

(LCMS/MS)

Analyte	Result (ppb)	LOQ (ppb)	Analyte	Result (ppb)	LOQ (ppb)	Analyte	Result (ppb)	LOQ (ppb)
Diquat	<LOQ	24	Glyphosate	<LOQ	24	Paraquat	<LOQ	24

(ppb) = Parts per Billion, (ppb) = (µg/kg), LOQ = Limit of Quantitation

Residual Solvents (CBD) (Passed)

(GC/GCMS)

Analyte	Action Level (ppm)	Result (ppm)	LOQ (ppm)	Analyte	Action Level (ppm)	Result (ppm)	LOQ (ppm)	Analyte	Action Level (ppm)	Result (ppm)	LOQ (ppm)
1,1-Dichloroethene	8	<LOQ	0.132	1,2-dichloroethane	5	<LOQ	0.032	Acetone	5000	<LOQ	12
Benzene	2	<LOQ	0.016	Butanes	2000	<LOQ	13.32	Acetonitrile	410	<LOQ	0.96
Ethanol	5000	<LOQ	16	Ethyl Acetate	5000	<LOQ	6.4	Chloroform	60	<LOQ	0.032
Ethylene Oxide	5	<LOQ	0.32	Heptane	5000	<LOQ	8	Ethyl Ether	5000	<LOQ	8
Isopropyl alcohol	500	<LOQ	8	Methanol	3000	<LOQ	4	Hexane	290	<LOQ	0.8
Pentane	5000	<LOQ	12	Propane	2100	<LOQ	26.668	Methylene chloride	600	<LOQ	2
Total Xylenes	2170	<LOQ	7.2	Trichloroethylene	80	<LOQ	0.4	Toluene	890	<LOQ	2.4

(ppm) = Parts per Million, (ppm) = (µg/g), LOQ = Limit of Quantitation

Xueli Gao Lab Toxicologist
 Ph.D., DABT

Aixia Sun Principal Scientist
 D.H.Sc., M.Sc., B.Sc., MT (AAB)

This report shall not be reproduced, without written approval, from ACS Laboratory. The results of this report relate only to the material or product analyzed. Test results are confidential unless explicitly waived otherwise. Accredited by a third-party accrediting body as a competent testing laboratory pursuant to ISO/IEC 17025 of the International Organization for Standardization.

721 Cortaro Drive
 Sun City Center, FL - 33573

P: +1 (866) 762-8379
 F: +1 (813) 634-4538

E: info@acslabcannabis.com
<http://www.acslabcannabis.com>

License No. 800025015
 CLIA No. 10D1094068

Order #: FEA200819-030047 Order Date: 2020-08-19 Collection Date: 2020-08-24 Report Date: 2020-09-09

Batch #: 20072A
 Sample #: AAAM024
 Specimen Type: CBD/HEMP Derivative Products (Ingestion)
 Extracted From: Hemp
 Description: Feals 1200

Method: SOP-3



Water Activity (Tested)

(Water Activity Analyzer)

Analyte	Result (aw)
Water Activity	0.254

(aw) = aw

Listeria Monocytogenes (Passed)

(qPCR)

Analyte	Result
Listeria Monocytogenes	Absence in 1g

Pathogenic SE (qPCR) (Passed)

(qPCR)

Analyte	Result (cfu/g)	Analyte	Result (cfu/g)
E.Coli	Absence	Salmonella	Absence

(cfu/g) = Colony Forming Unit per Gram

Xueli Gao Lab Toxicologist
 Ph.D., DABT

Aixia Sun Principal Scientist
 D.H.Sc., M.Sc., B.Sc., MT (AAB)

This report shall not be reproduced, without written approval, from ACS Laboratory. The results of this report relate only to the material or product analyzed. Test results are confidential unless explicitly waived otherwise. Accredited by a third-party accrediting body as a competent testing laboratory pursuant to ISO/IEC 17025 of the International Organization for Standardization.

721 Cortaro Drive
 Sun City Center, FL - 33573

P: +1 (866) 762-8379
 F: +1 (813) 634-4538

E: info@acslabcannabis.com
<http://www.acslabcannabis.com>

License No. 800025015
 CLIA No. 10D1094068

Order #: FEA200819-030047 Order Date: 2020-08-19 Collection Date: 2020-08-24 Report Date: 2020-09-09

Batch #: 20072A
 Sample #: AAAM024
 Specimen Type: CBD/HEMP Derivative Products (Ingestion)
 Extracted From: Hemp
 Description: Feals 1200

Method: SOP-3



Filth and Foreign Material (Passed)

(Visual/Microscope)

Analyte	Action Level (%)	Result (%)	Analyte	Action Level (mg/Kg)	Result (mg/Kg)	Analyte	Action Level (%)	Result (%)
Covered Area	10	0.000	Feces	0.5	0.000	Weight %	1	0.000

(%) = Percent, (mg/Kg) = Milligram per Kilogram, (%) = Percent

Xueli Gao Lab Toxicologist
 Ph.D., DABT

Aixia Sun Principal Scientist
 D.H.Sc., M.Sc., B.Sc., MT (AAB)

This report shall not be reproduced, without written approval, from ACS Laboratory. The results of this report relate only to the material or product analyzed. Test results are confidential unless explicitly waived otherwise. Accredited by a third-party accrediting body as a competent testing laboratory pursuant to ISO/IEC 17025 of the International Organization for Standardization.

721 Cortaro Drive
 Sun City Center, FL - 33573

P: +1 (866) 762-8379
 F: +1 (813) 634-4538

E: info@acslabcannabis.com
<http://www.acslabcannabis.com>

License No. 800025015
 CLIA No. 10D1094068

Full Panel Test Results.

PRODUCT:
The Flight

STRENGTH:
160 MG (2400)

BATCH #:
20073A

Having trouble reading these panel results?

Reach out to us at +1 844.311.9090

